

PROFILE

DELTA Engineering Company Limited
<http://www.deltagroupcomp.com>

info@deltagroupcomp.com
deltajor@deltagroupcomp.com
delta1@yemen.net.ye

2nd
Edition



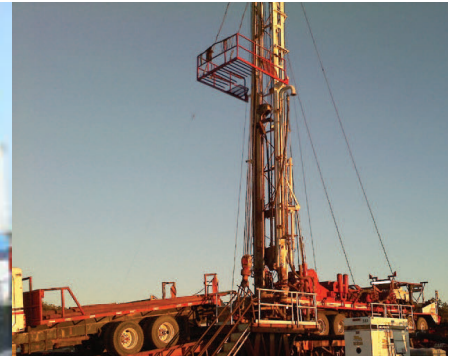
DELTA Engineering Co. Ltd.
www.deltagroupcomp.com



Profile
04



Vision, Mission & Values
05



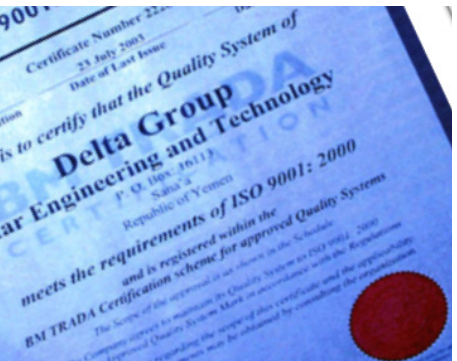
Preface
06



Delta Team
9



Delta Services
17



Awards & Achievements
90

04	PROFILE		
05	VISION, MISSION & VALUES		
06	PREFACE		
07	HISTORY		
09	DELTA TEAM		
10	DELTA CLIENTS		
11	DELTA GROUP OF COMPANIES		
90	ACHIEVEMENTS & AWARDS		
102	CONTACT DELTA		
		DRILLING	16
		FORMATION EVALUATION	32
		PRODUCTION	37
		TUBULAR RUNNING	49
		SUBSURFACE	53
		SUPPORT & MAINTENANCE	66
		COMPLETIONS	81
		INTERVENTION &	85
		ABANDONMENT	

16	DRILLING
17	DRILLING SERVICES
22	WORKOVER SERVICES
28	MUD ENGINEERING SERVICES
29	CEMENTING SERVICES
32	FORMATION EVALUATION
33	WIRELINE
35	PRODUCTION TESTING
36	WELL TESTING
37	PRODUCTION
38	MUD CHEMICAL SUPPLIES
40	COILED TUBING
41	EARLY PRODUCTION FACILITIES
45	CIVIL WORK
49	TUBULAR RUNNING
33	SUBSURFACE SERVICES
54	CORE ANALYSIS
56	MUD LOGGING
58	PETROGRAPHY
59	SEISMIC ACQUISITION
64	LAB
65	ELECTRICAL WIRELINE
66	SUPPORT & MAINTENANCE
67	LIFTING INSPECTION
68	FABRICATION
69	MECHANICAL & ELECTRICAL CONTRACTING
70	CATHODIC PROTECTION
71	MACHINE SHOP
76	TUBULARS ACCESSORY SUPPLIES
77	ZARQA FREE ZONE
81	COMPLETIONS
82	COMPLETION
83	STIMULATION
85	INTERVENTION & ABANDONMENT
86	SLICKLINE
88	FISHING





- Oil & Gas Drilling.
- Completion.
- Workover Services.
- Coiled Tubing Services.
- Oil & Gas Well Testing Services.
- Well Cementing Services.
- Tubular Running Services.
- Steel Works Fabrication such as Mud System, Storage Tanks, Pre Fab Houses etc...
- Machine Shop – Manufacture, Re-manufacture, Assembling, Repairs etc...
- Mechanical, Electrical and fire detection & extinguishing works, infrastructure, industrial and agricultural fields.
- Pipeline, well head maintenance and Oil Field supply.



DELTA also provides experienced personnel to meet requirements of Oil Companies at the level of expatriate as well as at local level which are based in the Republic of Yemen, Arab Republic of Syria, The Kingdom of Hashemite of Jordan, Arab Republic of Egypt, Republic of Sudan, Democratic Republic of Ethiopia and The Republic of Uganda.



Vision

To be a Preferred Partner in the Oil and Gas Industry



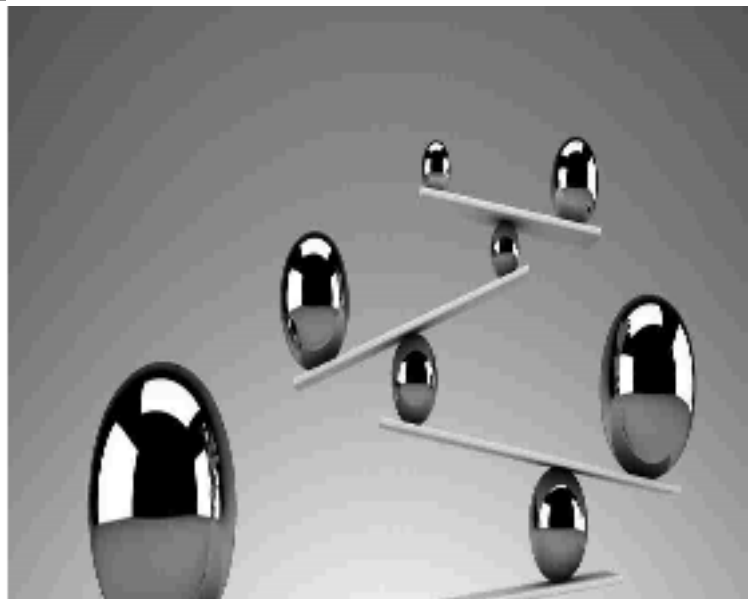
Mission

Delivery of Competent Oilfield Services to our Partners, with best cost effective rates, while maintaining quality expectation to ensure success, and also applying health, safety and environmental best practices.



Values

- Trust Relationships
- Commitment
- Best Practices
- Health & Safety
- Teams
- Cost Effective
- Followups
- After Services & Maintenance



DELTA Engineering Company LTD is an Oil field Service Company specializing in Oil, Gas Exploration and Water wells drilling including other Services such as Completion, Work over Services, Coiled Tubing, Wireline, Construction services, Steel Fabrication, Machine Shop and Oilfield supplies ,DELTA also provides experienced personnel to meet both the expatriate and local manpower requirements of other companies based in the Republic of Yemen.



Eng. Abdul Aziz Abdul Wasa'a Ahmed
Chairman of the Board of Director.

From the very beginning Today, DELTA, thank to I, along with dedicated god, do maintain firm management team, was policy on quality work determined to do whatever and our dedicated staff, er was necessary to build became a well reputed an International Oilfield Services Company Organization that could which can meet and exceed the meet the standard of any other any International Oilfield International Company in Services Company. our profession.

We take creditability and sincerity as a platform of our development and we are indeed committed to utilize our advanced technology to serve our clients.

DELTA have won the high reputation both in the Rep. of Yemen and abroad for our Performance and high reliability. We persistently adopt new Information technology to align with new generation of technology in the field of oil and gas exploration & Production.





DELTA Engineering was established in 1986. The president of the company, having thirty years of operational and management experience in the oil industries, decided to go alone.

The Company developed excellent relationships with major Oil Companies Operating in the Middle East, U.S. A, Africa and the Far East.

Since establishment of DELTA it has expanded remarkably not only that but as a reputable company. The credit for this achievement is due to DELTA's dedicated & highly professional.

DELTA since its establishment in 1986 has been implementing Drilling and Workover Services, Coiled Tubing, Wireline (Slickline) Services, Construction and Machinery Workshop to several international petroleum Companies (API) standard.

DELTA's rigs are run by highly qualified, dedicated and professional staff with the backup of a fully Equipped workshop and machine shop facilities.

Today DELTA, maintains improvements and keeps the pace of developing itself till it became one of the best and largest Oilfield Services Company in the Republic of Yemen and the Middle East.

Due to highly qualified professional Management's performance, DELTA has been awarded the ISO 9001:2000 and UKAS (The Quality Management), the IADC membership, Gold award for excellence and business prestige and Winner of the International Star for Leadership in Quality Award in New York 2010.





DELTA's goal is to be all the way to remain most respected and reliable Oil Field Service Company in the given industry by providing unparalleled services to our clients.

And how do we achieve this ?

- By selecting best and professional work team.
- Always strives to keep "safety" a top priority.
- By using the modern technology and most reliable equipment in the operation.
- We maintain highest integrity level in our performance.

Task Force: We consider our task force as main asset and the source of our strength. They nurture our intelligence and determine our reputation and vitality. Professionalism and teamwork spirit demonstrate human values. As much as we pave path to our crew to improve their individual personal skills and further empower them to create a dignified and long-term career objectives.

Safety First: The safety of people, worksites and equipment is our top priority. Safety comes before productivity as precautionary measures.

Equipment: Our services and equipments are exceptionally reliable. We do also maintain a highly reliable fleet of rigs with affiliated parts, which is essence to our success.

Integrity: A subject of Integrity is never compromised in our company policy. The code of conduct of the company is pursued in a manner that is socially responsible, respect given for individual integrity and for its positive contribution to society.



Management Team



Abdulaziz Ahmad

Chairman



Abdulmoen Al Asbahi

Group Vice President



Zakareyya Aldhubhani

Group General Manager



Esam Aldhubhani

Group Executive Director



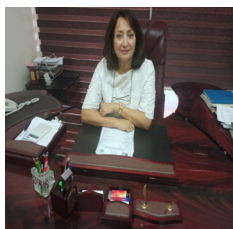
Ashour Al-Shebani

Operations Manager



Salim Ouzani

Regional Director
Sultanate of Oman



Safwat Ali

General Manager -
Amman Office



Mohammad Shamiri

General Manager -
Cairo Office



Jameel Saif Alasbahi

IT-Consultant



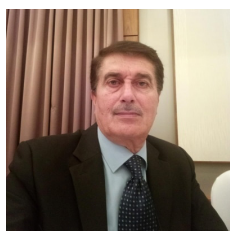
Fahmi Soltan

Financial Controller



Ahmad AbdulAziz

Construction Manager



Riyadh Kamel

Coordination Manager



Osama Hijazi

Drilling & Workover Manager



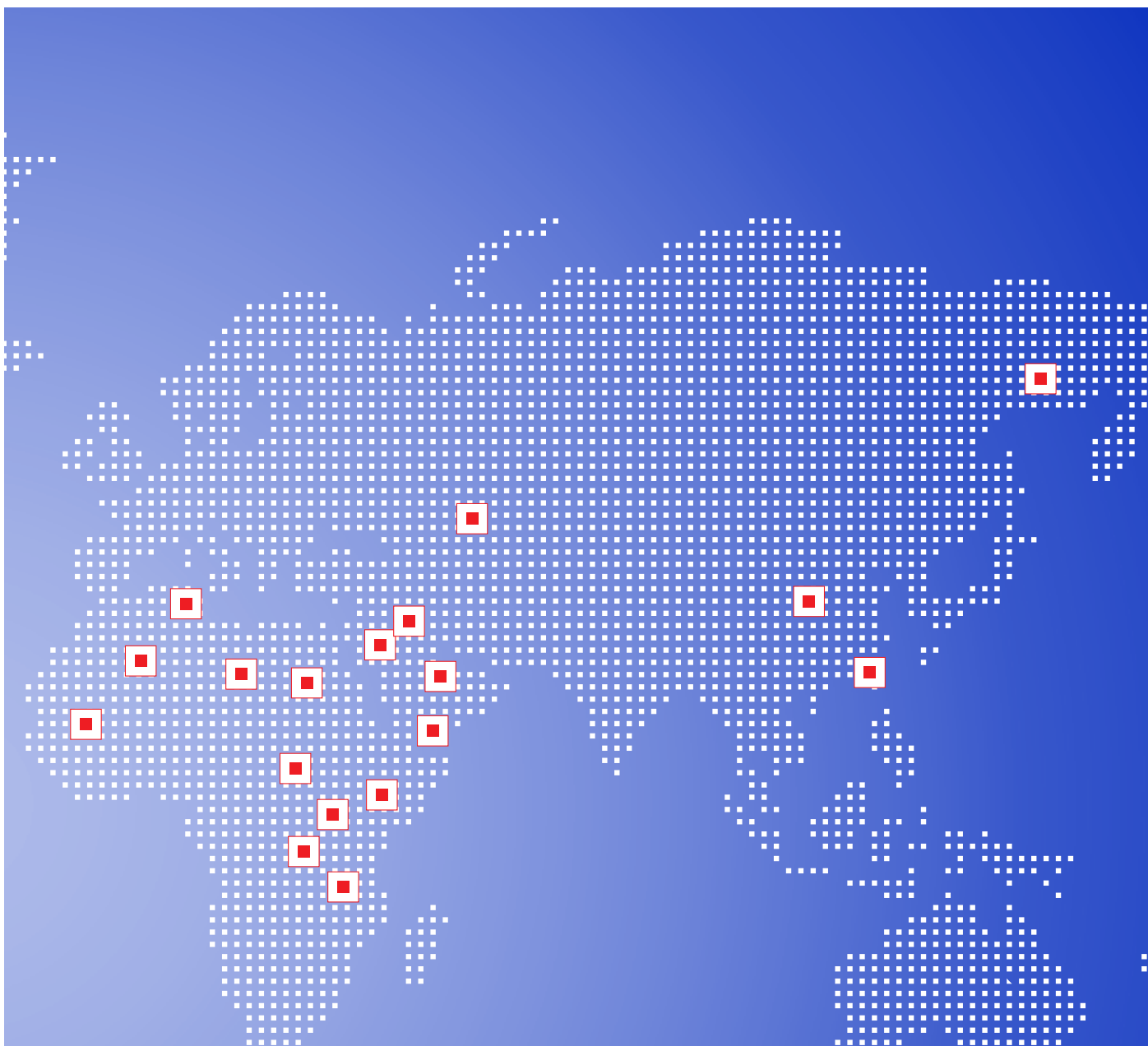
Ma'en Abdullah

Architect Engineer



Our Clients





DELTA Engineering Company Ltd.	Ethiopia
DELTA High Advance Ltd	Sudan
AL-YAMAMA Water Resource	Sudan
AL-DHUBHANI Transport Co	Sudan
STARTECH Machinery Uganda Ltd.	Uganda
DELTA Oilfield Services Uganda Ltd.	Uganda
IMDAD DELTA	Libya





DELTA Engineering
Co. Ltd.



DELTA Engineering
Co. Ltd.



STAR Specialized Oil-
field Services Ltd.



STARTECH



Star Engineering &
Technologies



DELTA Engineering
Co. Ltd.



DELTA High Ad-
vance Ltd.



EASTERN Oil



AL-YAMAMA Water
Resource



STAR Specialized
Oilfield Services Ltd.



AL-DHUBHANITrans-
port Co.



PETRODEL
Co. Ltd. Hong Kong



STARTECH Ma-
chinery Uganda Ltd



DELTA Engineering
Co. Ltd.



DELTA Oilfield Ser-
vices Uganda Ltd



IMDADDELTAOilField
Services





Today, DELTA, thank to god, do maintain firm policy on quality work and our dedicated staff, became a well reputed Oilfield Services Company which can perform the standard of any International Oil-field Services Company.





DELTA is an oilfield Services Company specializing in Oil, Gas Exploration, Production and wells Drilling including other Services such as Completion, Workover Services, Coiled Tubing, Slickline and Rental basis for Pumps, Mud Systems and Other Oil Field Tools & Equipment.





Drilling Services

1. Drilling Services.....	17
2. Workover Services.....	22
3. Mud Engineering.....	28
4. Cementing Services.....	29



Delta Drilling Services at a Glance



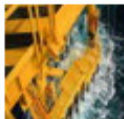
Well Analysis and Planning



Well Drilling



Offshore and Onshore



Safety and Well Control



Rig Management



Workover



Stimulation, Fishing & Milling



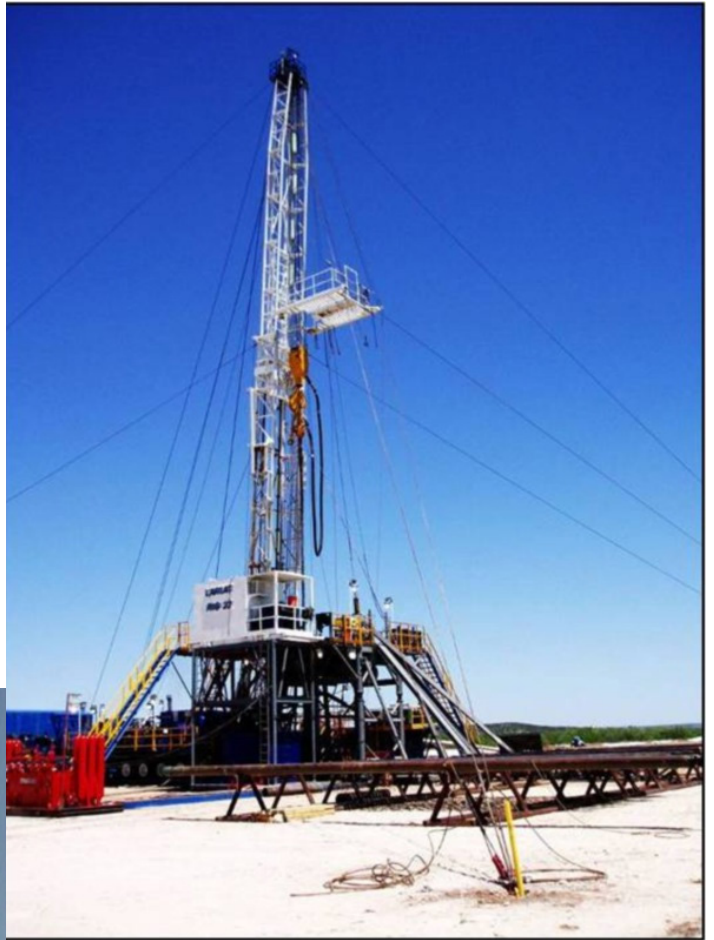


DELTA has its remarkable wide range capacity of Drilling Rigs from 1000 HP & 2000 HP

DELTA Rigs combines sturdy construction with mobility in the most inaccessible areas, high performance, safety and easy operation. Also can drill through all soft, medium and hard formations utilizing rotary, down hole percussion, mud or foam drilling as required.

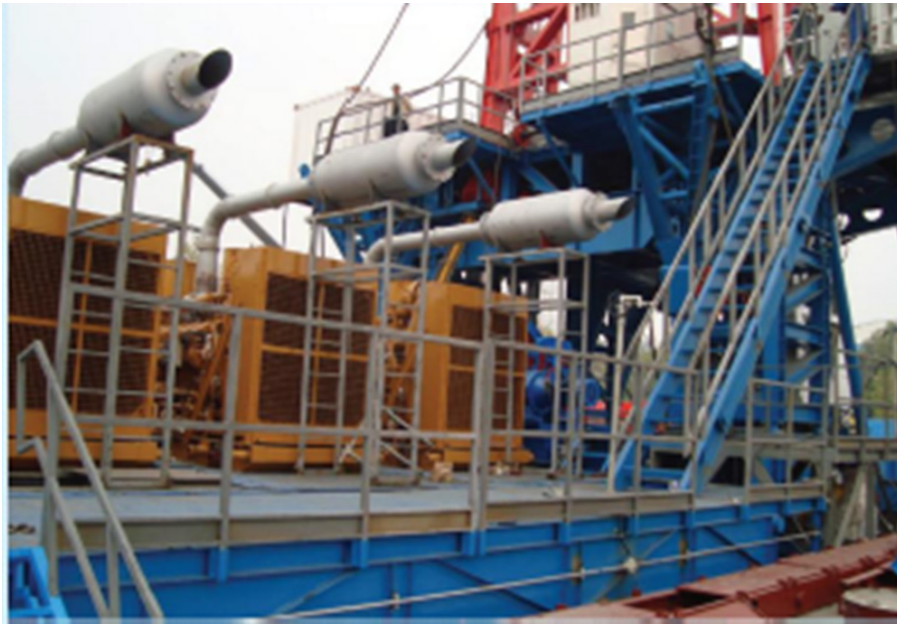


We take creditability and sincerity as a platform of our development and we are indeed committed to utilize our advanced technology to serve our clients.



Oil and Gas Well Drilling, World-wide Rig Management, Onshore and Offshore, Workover, Completion, Coiled Tubing, Wireline Operations and Construction Services of Civil Works.





A namazingthing happens when you engage DELTA to work for you indeed you achieve results.



So let DELTA assist you in your preceding venture. You'll find demonstration of complete professionalism and total dedication exerted to the success of your projects.

DELTA Drilling Rigs Capacity of 1000 HP & 2000 HP used for Drilling Oil and Gas. They are equipped with all well control equipment, mud system, BHA and Handling Tools.

DELTA has won the high reputation both in the Rep. of Yemen and abroad for our performance and high reliability. We persistently adopt new information technology to align with new generation of technology in the oilfield.





DELTA has its remarkable wide range capacity of Workover Rigs from 500HP to 1500HP

DELTA Workover Rigs at Calvalley Block 9 Oilfield in the Republic of Yemen.



DELTA can easily operate and adapt to various climatic and weather conditions: - snowy, flood, stormy, dry and wet ground, over and above be it summer or winter season, while maintaining HSE at highest expected standard.





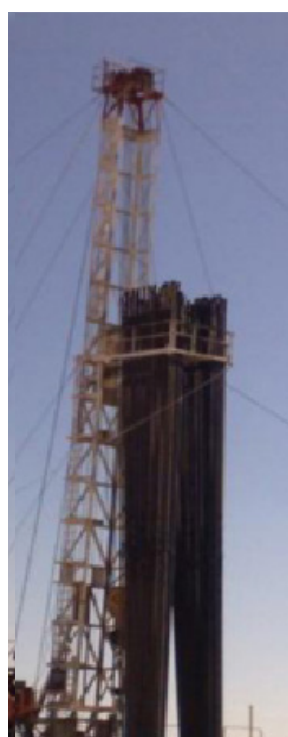
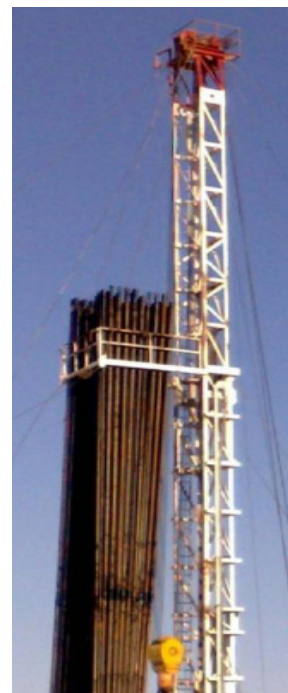
DELTA Workover Rigs
at OPC Tishreen Oilfield
in the Arab Republic of
Syria.



DELTA Workover Rig at DUBLIN Pe-
troleum Company Tishreen Oilfield
in the Arab Republic of Syria.



DELTA Workover Rigs on Location



DELTA Rod Pulling Rigs



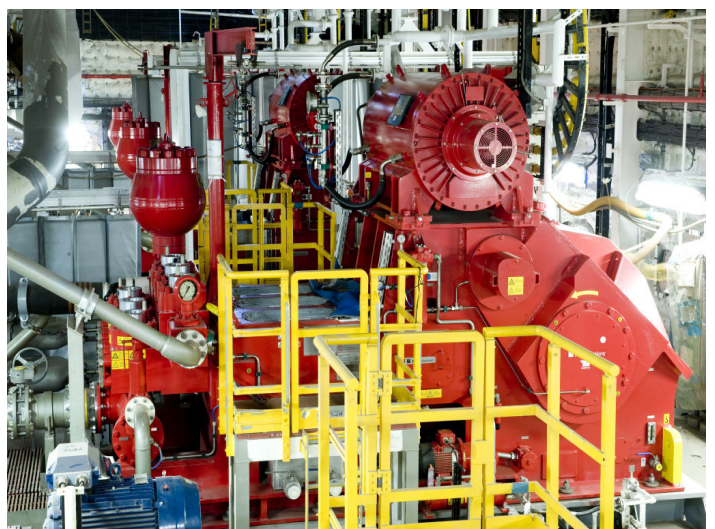
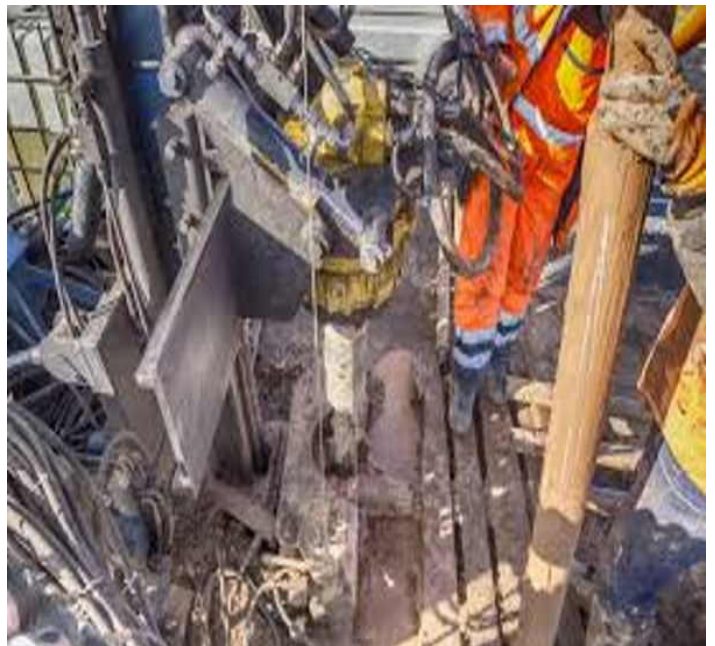
Workover Rigs on Site Operations



Having combined our highly competent crews, strong equipment bases and experience gained while executing a variety of projects, we are able to provide a full slate of onshore drilling services to the oil & gas upstream industry.

MUD ENGINEERING SERVICES:

- ▶ Developing and supplying drilling fluid systems both for drilling and workover activities
- ▶ Capable of delivering water & oil based fluids according to requirements also for HPHT and sour gases environments
- ▶ Well trained and experienced staff with great skill to run Solids Control Equipment (e.g. barite recovery, flocculation, etc.)
- ▶ RIG PARTS AND Performing tests on new mud additives together with the laboring of mud systems
- ▶ Continuous checking of mud chemical quality 24 / 7
- ▶ Mobility and availability for on-site laboratory services
- ▶ Consulting and advising - Flexibility to fit Clients requirements - Mobile Evaporators System as an environmental solution for high salinity wastes
- ▶ Supervision of solid control system on rig site
- ▶ Supervision of drilling fluid cleaning system





Twin Pump Cementing Trailer



Twin Pump Cementing Trailer



Single Pump Cementing Trailer



Twin Pump Cementing Skid—Zone II



Batch Mixing Skid





Sand Blender Skid



Sand Blender Skid



Formation Evaluation Services

1. Wireline Services.....	33
2. Production Testing.....	35
3. Well Testing.....	36



Wireline Equipment Services

DELTA offers a complete and broad range of the highest quality wireline equipment and services for the oil and gas industry, including:

- Industry Standard oil well logging tools. All our tools are powered by computerized systems> Our tools can work with tough and high temperature conditions.
- Latest Technological logging tools for groundwater, mineral and geotechnical applications, including our slim hole tools.
- Rock and fluid sampling Equipment.
- Mud logging tools and units.
- Miscellaneous logging tools such as QUARTZ pressure and temperature gauges.
- Pipe and rig inspection and testing services.
- Casing and Tubing Cutters & Tools.
- Logistics, Maintenance & Research Wireline Services



Wireline Services

Our experienced wireline crews use the latest tools to help partners achieve maximum lifetime production from wells.

- Tubing and hollow carrier gun systems
- Multiple detonation systems
- Well integrity services
- Leak detection services
- Pipe recovery services
- Completion, intervention and abandonment services
- Production logging services, interpretation and analysis
- Downhole sampling and video production
- Pulse neutron surveys





Wireline Equipment Tools

DELTA provides a wide range of Wireline Equipment Tools, in various areas, including Logging, Slickline, Line Marking, and Others. Examples include: Analog Panels, Tension Devices, Backup Display Panels, Hole Measuring Heads, Intensifiers, Marking Systems, Slickline Spooling Base Mounts, Braided Line Measuring Heads, Winch Operator's Slickline, Intercom Systems, Alcohol Drip Systems, and many more (Contact Us for a Complete List).





DELTA provides a total line of Flowback and production testing services. Our highly qualified technicians are specialized in: Frac Flowback Services, Coil Tubing Mill Outs, and Flowbacks.

Production Testing Equipments

- Four-Phase Frac Separator
- Horizontal Four-Phase Frac Separator
- Pressurized Storage Tanks
- Line Heaters
- Double-Drop Choke Manifold
- PSI ESD





Our mission at Delta has always been to serve as an industry-leading provider of well testing. That's why we use only the very best equipment, procedures, and expertly trained personnel. This ensures that we can deliver both efficient and cost-effective results, while maintaining the highest standards in safety and client satisfaction. That is the Delta Management & staff commitment.

DELTA WELL TESTING SERVICES

- Digital Gas measurements
- Digital fluid measurements
- Gravity monitoring
- Chloride readings
- Real-time logging and reporting
- Low emission capabilities
- Hydraulic choke equipment and services
- Alarm Systems
- Research and Analysis

Production Services

1. Artificial Lift.....	38
2. Mud Chemical Supplies.....	40
3. Coiled Tubing.....	41
4. Early Production Facilities.....	45
5. Civil Work.....	46





Artificial Lift

In the current environment of low oil prices, operators are under tremendous pressure to reduce production costs and improve production.

The only sustainable option for operators is to introduce new technologies that increase efficiency, improve reliability and lower initial & operating costs.

Delta Engineering & Oilfield Services meet this challenge by providing innovative technical solutions that protect and enhance artificial lift system performance.

Our association with Oildynamics GmbH offer products that are designed specifically to operate in hostile environments that include high gas and high solids. They also provide greater efficiencies in more benign conditions, reducing overall electricity usage.

The net impact of Oildynamics GmbH Artificial Lift Systems is higher environmental and economic sustainability for our customers.



Electric Submersible Pumps (ESP)

Built to survive ESP systems

We provide ESP systems better than the rest, because we know they have to perform in hostile environments, and under the toughest conditions.

The result? 100%-reliable, best-in-class-systems, made in Germany, that ease your work and help you to produce more energy. They come with a legendary service to rely on. Turn-key is the key to your success

ESP systems are the main artery of water production from deep lying aquifers.

Flow rates in water applications are demanding. Therefore, our ESP systems come with a variety of specific speed designs that perfectly match your requirements in terms of pressure and production. The ESP can be installed in almost any production well regardless of depth, well inclination and operational conditions. Due to its flexible design with a large variety of technology upgrades like induction and permanent magnet motors,





imageportfolio

Drilling & Workover Chemicals & Additives

DELTA supplies a broad range of proprietary oil drilling chemicals for all your drilling needs.

Our solutions are designed to help lower costs and maximize efficiencies.

We can also custom blend chemicals to your exact specifications.

Our high-quality specialty chemicals and drilling fluid additives are produced in compliance with all environmental, health, and safety regulations.

Sample Chemicals Categories provided by DELTA:

- Shale Stabilizers
- Fluid Loss Control
- Dispersants & Deflocculants
- Lubricants
- Specialty muds
- LCM's & Weighing Agents
- Spotting Fluids
- (OBM) Oil Based Mud Products
- Viscosifiers
- Scavengers

Production Chemicals

Oil production chemicals are not all the same.

When you need consistent quality chemicals that will not only provide exceptional performance, but actually increase your efficiency, you need Oilfield Chemical Company.

Our knowledgeable team has the right answer, coupled with combined experience in the oilfield production chemical industry and is completely dedicated to providing clients with innovative, cost effective solutions. As a full service company, we provide everything from specialty chemicals and custom blending to chemical performance monitoring in the field. We also offer a suite of technologically advanced laboratory services, drilling products and rental equipment.

Here are some of the production chemicals we offer:

- Acids & Biocides
- Carbon Dioxide Scavengers
- Corrosion Inhibitors
- Defoamers & Demulsifiers
- Flow-Enhancement Chemicals
- Foamers & Hydrate Inhibitors
- Hydrogen Sulfide Scavengers
- Oxygen Scavengers
- Paraffin Dispersants
- Paraffin & Salt Inhibitors
- Scale Inhibitors & Surfactants
- Water Clarifiers





COILED TUBING SERVICES

Coiled Tubing operations allows to shorten the duration of drilling, completion, workover and restoration works by means of exploiting their obvious advantages such as mobility, quick installation, interruptive-continuous process of RIH/POOH with Coiled Tubing.

CT techniques are widely used in works related to well completion and other downhole operations in combination with high-pressure blowout preventers.

Our CT services employs highly qualified and experienced engineering and technical personnel ready to advise and assist clients regarding proper selection of the equipment they need, operating parameters modeling, recommendations for optimizing operational processes, etc. Due to the reduction of works duration and minimization of producing formation damage, our services allow Clients to optimize economic performance.



Coiled Tubing Units



is a self-contained, mobile, self propelled unit including Hydra Rig manufactured injector, hydraulic power pack, reel and control cabin with a Halliburton HT-400 Triplex pump mounted on a 40 foot trailer and pulled by a Ken-worth 953 Desert Truck.



Nitrogen Tanks & Mud System



DELTA Direct Fire N2 Pumper



MUD System



N2 Pumper



Separators Section





Our commitment of EPFs is designed to meet requirements of oil and gas fields. We offer separate solutions for oil or gas production facilities, or a combined facility that will efficiently handle both oil and gas using a single communication, command and management module.

Frames EPFs can be delivered in a fast turnkey operation with transparent deliverables including well site equipment, utilities, control rooms, civil works, plant commissioning and long-term operation. Once on site, our team will be working with our global network of local partners to complete all site activities, and bring the facility into safe production as quickly as possible.

Our Services:

- Provision of Floating: FPS offers the operator a cost-effective solution for deep water and marginal yield developments where a fixed structure is not possible.
- Oil & Gas Sweetening Systems
- Production Handling & Enhancement
- Remote Monitoring and Process Automation
- Collecting further reservoir data
- Optimizing Production
- Control & Early Detection



1- Earth Works

- Road construction & Design
- Improving and Upgrading for all existing roads and access
- Construction drilling site locations
- Clearing & Grubbing for pipeline route

2- Concrete & Structural Services

- Reinforced concrete foundation and pads
- Casting all pipeline supports
- Pre-cast concrete structure
- Installing & construction of steel fencing

3- Building and Residence shacks

- Accommodation Projects
- Industrial Storage
- Landscaping & Industrial Design

4- Steel structure Building

- Install of Hunger Building
- Install of pre-fab Houses
- Warehouses & concrete Building.

5- Infrastructure projects.

- Sewage network & Sanitation.
- Stormwatersystem, flood protection works.





1-Sandblasting and painting of pipe & structural steel.

2- All pipeline works.

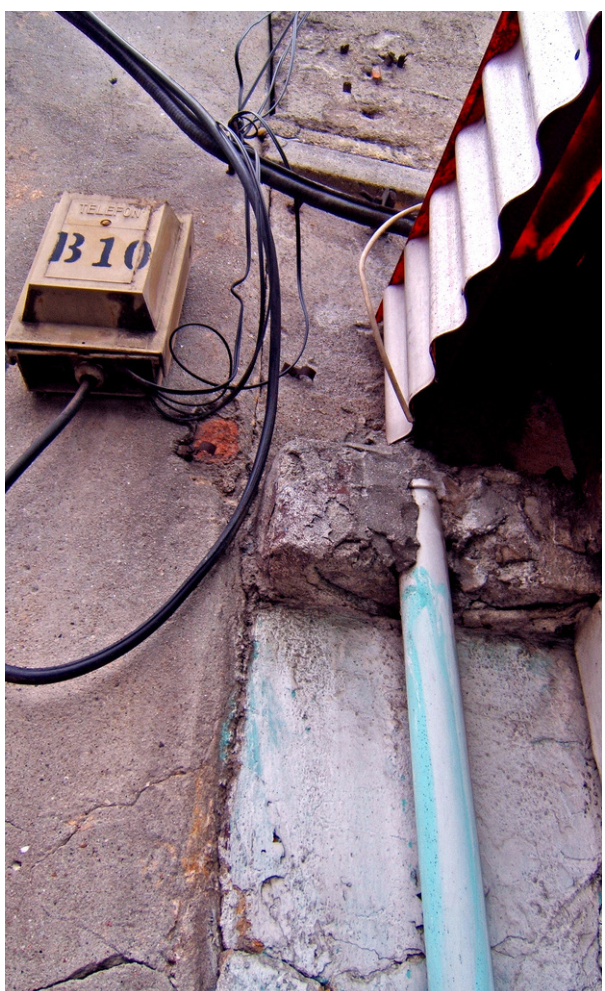
3-Fabricating and Installing of all piping, valves, manifolds and other control equipment

4-Mechanical & Electrical construction of plant, field facilities and installation.

5- Installing all electrical equipment including Generators, Lighting panels, power transforms, cables trays, conduit cable and warning systems.

6- Installing all mechanical injection skids, including vessel tanks, pump skids and manifold chemical injection skid including civil base.

7-General fabrication and coating services.



Transportation Services (Trucks)



Tubular Running Services

1. Tubular Running Service.....50



Tubular Running Services



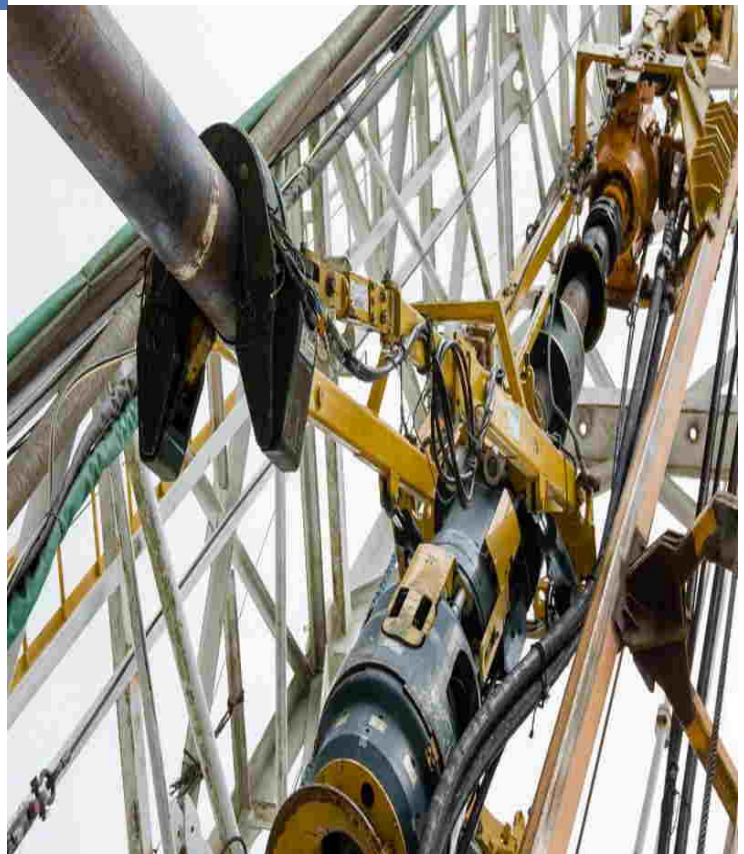
Our Tubular Services help minimizing wellsite risk and reducing nonproductive time. We provide Tubular Running Services (TRS) operated by highly trained personnel focused on safety, quality, efficiency and well integrity.

DELTA tubular running services facilities safe and efficient running of tubular, minimizing wellsite risk and reducing nonproductive time. As one of the casing / tubing running company in the world, we offer an extensive selection of advanced mechanized tubular running equipment.

TUBULAR RUNNING SERVICES OFFERED INCLUDE:

- Supplying casing and tubing equipment covering all sizes from 2 3/8" to 32"
- Providing bucking service making up tubing hangers, float collars and float shoes
- Supplying casing accessories
- Equipment and Resources
- Power tongs
- Fill-up tools
- Handling tools
- Torque/turn monitoring system
- Dual tubing power tongs and handling tools
- Chrome casing/tubing handling tools
- Hydraulic power units
- Bucking units
- Casing centralizers
- Torque and drag reducers
- Stop collars
- Float shoes

All enquiries are welcome



DELTA tubular running services facilities safe and efficient running of tubular, minimizing well site risk and reducing nonproductive time. As one of the casing/tubing running company in the world, we offer an extensive selection of advanced mechanized tubular running equipment.

Power Tongs

Drill Pipe Tongs are designed to allow for the quick and safe running of your drill pipe. These tongs are available in Different sizes.

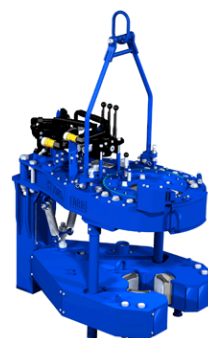


Casing Tong designs are available to deal with high-torque casing, lightweight casing, for continuous output torque and the unique gated-rotary design. Size ranges available to meet your casing needs.



Tubing Tong have been designed for rugged use and reliable performance-even at the higher torque required to break premium connections.

Our two-speed, sealed planetary gear transmission assures you dependability with minimal maintenance





Hydraulic Power Units

Electric-or diesel-power units are available to provide a reliable power source for a wide range of hydraulic requirements, including onshore and offshore applications. Our power units can be used to power everything from a single piece of equipment to a complete rig-system solution.

Delta power units are available in standard or custom designed configurations and are generally skid mounted.

Handling Tools

DELTA provides a variety of handling tools to increase efficiency while eliminating dangerous rig-floor operations.

Bucking Unit

Our two-speed, sealed planetary gear transmission assures you dependability with minimal maintenance.



Subsurface Services

1. Core Analysis.....	54
2. Mud Logging.....	56
3. Petrography.....	58
4. Seismic Acquisition.....	59
5. Lab.....	64
6. Electrical Wireline.....	65



Core Analysis

ROUTINE CORE ANALYSIS

Datalog understands operator's needs for rapid and reliable routine core analysis data, datalog mission is providing academic precision routine core analysis data within commercial rapid turnaround timing; Routine Core Analysis Services include:

- Total and Spectral Core Gamma.
- Fluid Saturation by both retort, and Dean-stark methods.
- Core Plugging, different sizes.
- Core Cleaning and drying by different methods.
- Helium Porosity, Nitrogen Permeability and Grain density measurements at both ambient and overburden conditions.
- Core photography under White and UV light.
- Core biscuit museum preparations.
- Core samples archiving and storage.
- Core analysis database management.
- Full package of Whole Core Analysis.

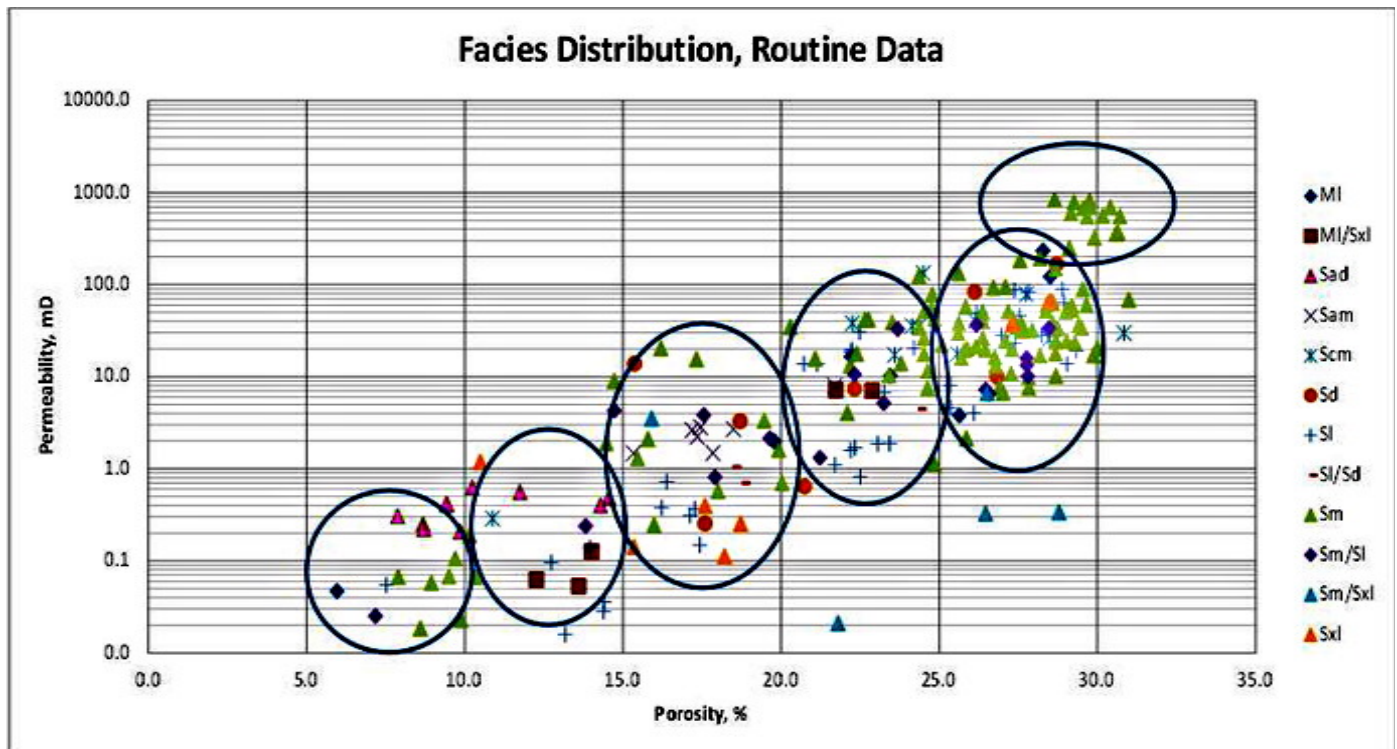


Special Core Analysis

Special Core Analysis Services include the following analyses at room & reservoir conditions:

- Electrical Properties measurements, Formation Resistivity Factor and Resistivity Index by different methods.
- Capillary Pressure measurement by Porous Plate and Centrifuge and by Mercury Injection.
- Wettability measurements, Harvey Amott, USBM & Combined.
- Relative Permeability by Unsteady & Steady state methods.
- Core Flooding analyses.
- Rock Mechanics Acoustic properties and more.

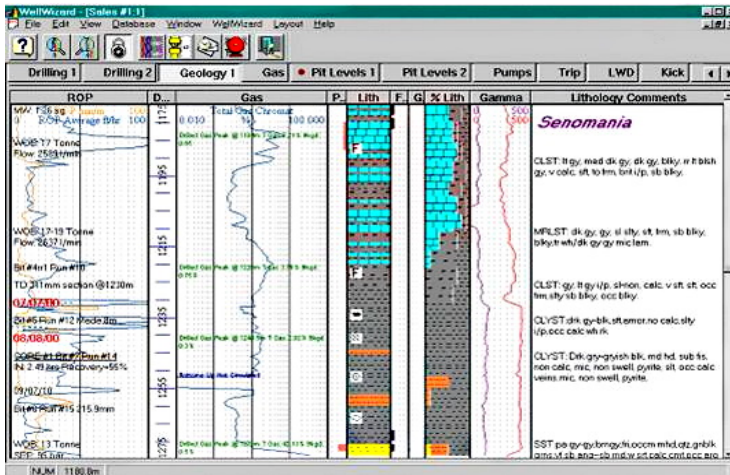
OUR CORE ANALYSIS SERVICES



- Spectral Core Gamma
- Fluid Saturation
- CT Scanning
- Core Plugging and Slabbing
- Permeability Measurement
- Sample Preparation
- Core Drying
- Porosity Measurement
- Core samples Archiving and Storage



Mud Logging Services



WELLWIZARD FEATURES

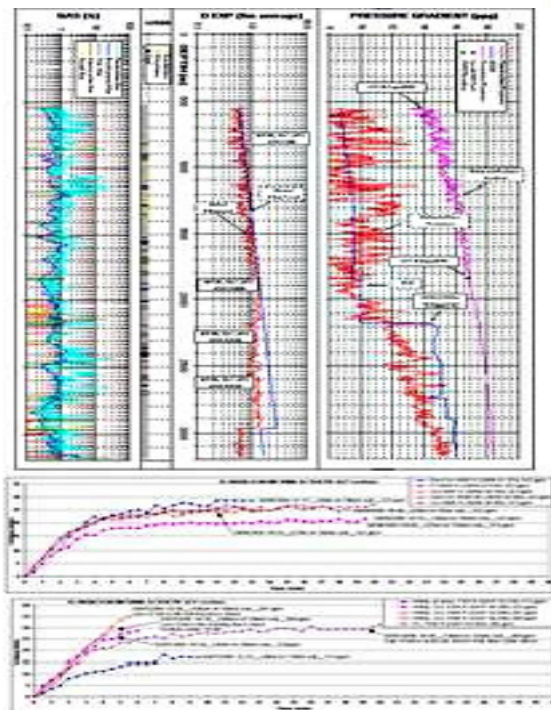
Viewing of multiple wells, in RT or historical data offsets. Each user can configure individual screen displays, unit preferences, track layouts, scales etc... Events Library for storing & viewing data files, spreadsheets, word documents etc., associated by depth or time. Ability to report and view all DD, MWD, LWD, LWT, Wireline data TVD log plotting. Import /Export of all numerical data (LAS, ASCII, WITS etc.).

Mud Logging Unit

Datalog cabins are designed, built & independently certified by DNV to meet this extreme standard of safety.

Quality Output

We cultivate our own talent. Mud logging requires individuals with unique skill sets, so we provide our specialists with competency-based training that complements their field experience. As a result, you have access to a global team of highly qualified mudlogging experts.



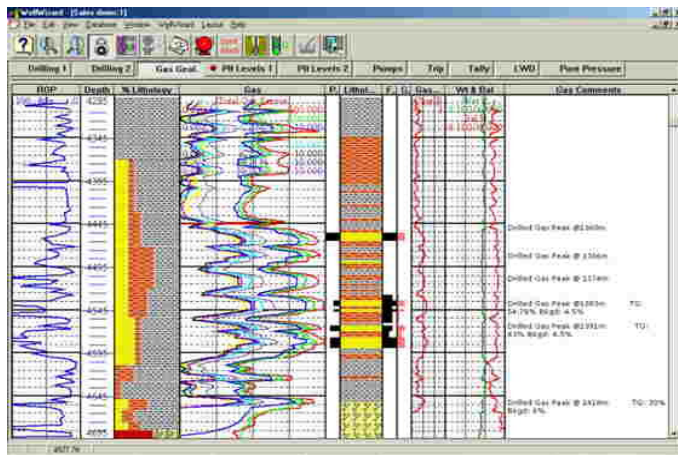
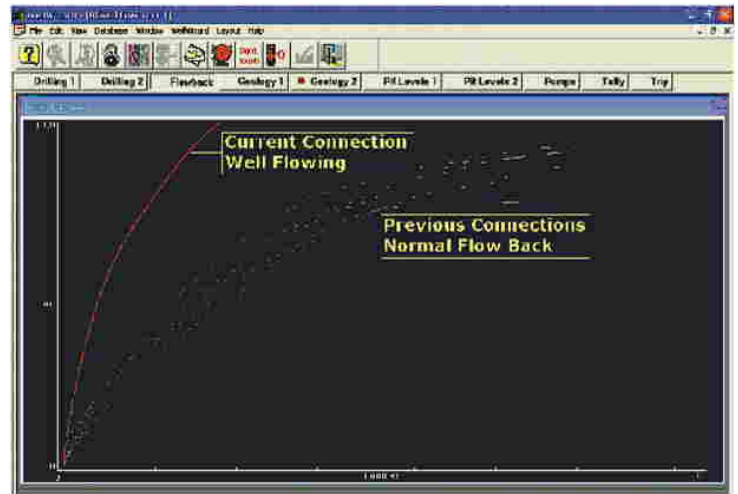
Formation Pressure Evaluation

Qualitative techniques are used as the basis for formation pressure evaluation analysis. Parameters monitored include:

- Dxc (the primary measurement)
- Gas relationships (background gas, Connection and trip gases, ECD, MW)
- Drilling Fluid Temperature.
- Drilling Fluid Conductivity.
- Rotary Torque, Fill, Overpull.
- Cuttings character;
- Cavings, Shape and volume.
- Analysis of formation pressures in shaly sequences qualifying under-compaction disequilibrium.

Advanced Kick Detection

Flow Back Monitoring Analyzing connection “flow back” trends to identify kicks. Every connection mud flows back to pits, traditional kick detection is almost blind because of increase pit volume and lack of flow, & reduction in ECD while pumps are off makes it more likely a kick will occur. Software automatically plots fluid flow at each connection, any deviation from “normal” is easily recognized, by Driller or Mud Loggers.



High Speed Gas Chromatography

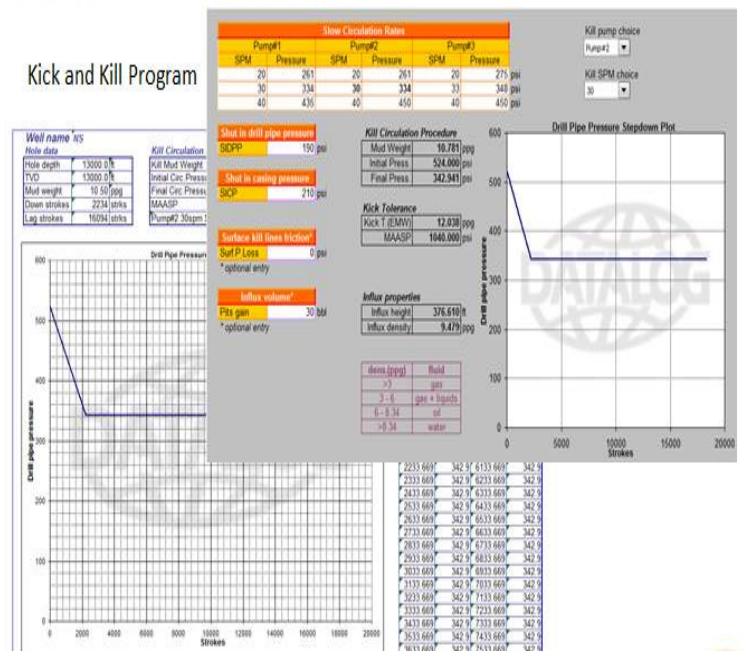
- Default C1, C2, C3, IC4, NC4, IC5, NC5 & C02 (others possible), sampled & analyzed every 30 seconds (or less).
- Non-flammable Helium reference gas (safety consideration, particular in offshore work).
- Columns with independent solid state injection, analytical & reference column, thermal conductivity detector.
- Excellent separation of all gases.

Gas Ratio Analysis

- The ANAX 500 system provides several gas ratio analysis methods processing data from the high speed chromatograph.
- RT wetness, balance and character ratios indicate the hydrocarbon type specified as its grade (heavy oil, medium, light, condensate gas, light gas).
- Individual plots of specified zones generate Pixler Plots to characterize productive or non-productive oil or gas, with relative permeability.
- The users may define their own hydrocarbon ratios (or ratios from any other parameter calculated by the ANAX 500 system).
- Standard hydrocarbon gas ratios are used to determine oil/gas/water contacts.

Engineering Assistance Programs

Kick and Kill Program



Petrography

DELTA offers wide range of petrographic analysis which are essential for core analysis data interpretation, better reservoir characterization understandings rock diagenesis and full basin and depositional environment studies; Datalog mission in Petrographical analysis is providing ultra-high resolution pictures with extensive academic description with flexible report formatting to integrate in full reservoir characterization studies; Petrographical services include:

Thin Section preparation and analysis with the hot shot analysis to meet our client expectation.

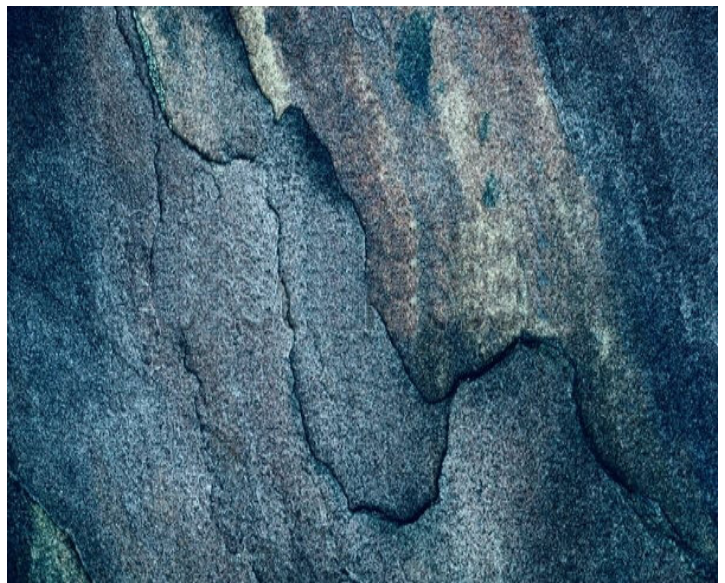
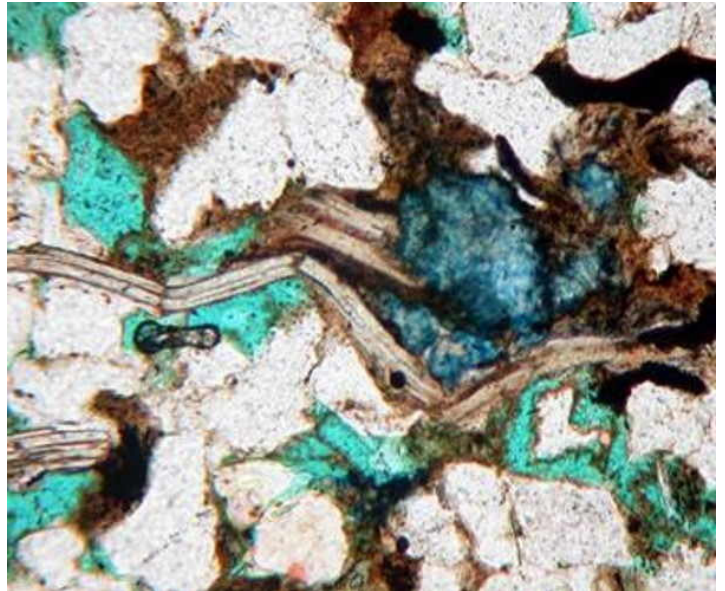
Scanning Electron Microscopy (SEM) with EDAX facility, with different objectives for description, near wellbore alterations and comprehensive deposition, mineralogy and diagenesis description.

X-Ray Diffraction XRD analysis for both Whole rock and clay fraction samples.

X-Ray Fluorescence XRF for elemental identifications.

CAT scan for both whole core and core plugs for different purposes, fracture studies, sample validity and maximum up dip identification.

Grain Size analysis.





Seismic Services

Services offered include:

- Seismic Reflection 2D/3D/4D using third generation full wave
- Recording Vectorseis RN technology from INVOA USA
- Shallow Seismic Reflection
- Seismic Refraction
- High Resolution Seismic Refraction

Delta is associated with Makamin. Makamin with acquisition of its partner company (GSC) capabilities include use of the most advanced seismic equipment. The company is supported by the leading USA Seismic Exploration technology input/output Company. GSC-U K has acquired seismic field equipment in partnership and support from INOVA USA capable to record over 6000 channels 2d/3d Dynamite and/or using Vibroseis and the latest third generation Full wave digital 3D component Vectorseis geophones to record P and S waves. GSC-UK continuously looks to expand activities and welcomes the opportunity of Joint projects in the region.



The company processing experts have worked for over 35 years worldwide in 2D/3D seismic data acquisition, processing and interpretation. We processed and interpreted tens of thousands of kilometers 2D and 3D seismic data from different regions from the world.

As explorationists, we know that you are very mindful of time and quality of data analysis; We identified the following as potential requirements.

Experienced explorationists team using advanced processing technology to:

- increase signal to noise ratio (S/N) of the seismic data
- Improve continuity of the geological horizons
- Remove possible false geological features
- Derive the most accurate velocities for stacking and depth migration
- Extract the best wavelet for seismic de convolution
- Preserve the relative amplitude for direct hydrocar-



SEISMIC ACQUISITION

SEISMIC DATA INTERPRETATION

Our team has a very solid background in signal analysis for seismic applications combined with a strong experience in the area. Our objective is to work for you and with you as one team to produce a true geological section.

SEISMIC DATA INTERPRETATION

GSC-UY. adopted software includes 2D/3D interpretation packages performed interactively using the power of the PC workstation from Hewlett Packard. Our software is supported by Landmark.

Services include:

- 2D Interactive package which allow tor complete interpretation of your processed seismic data together with possible integration of the geological information derived to produce final Interpreted maps in time and in depths. Also the user can perform post signal analysis for seismic attributes study. QC process is available at all phases of in terpretation-3D interactive package which is the state of the art 3D interpretation for all kinds of post processing signal analysis. Slices display in the time and/ or in depth could be generated. Also to produce all kinds of interpreted maps 2D & 3D. Structural 3D Movie views are also available with QC possibly at any phase of the interpretation process

- Well log analysis and reservoir studies are available and integrated with the 2D/3D/4D seismic interpretation.

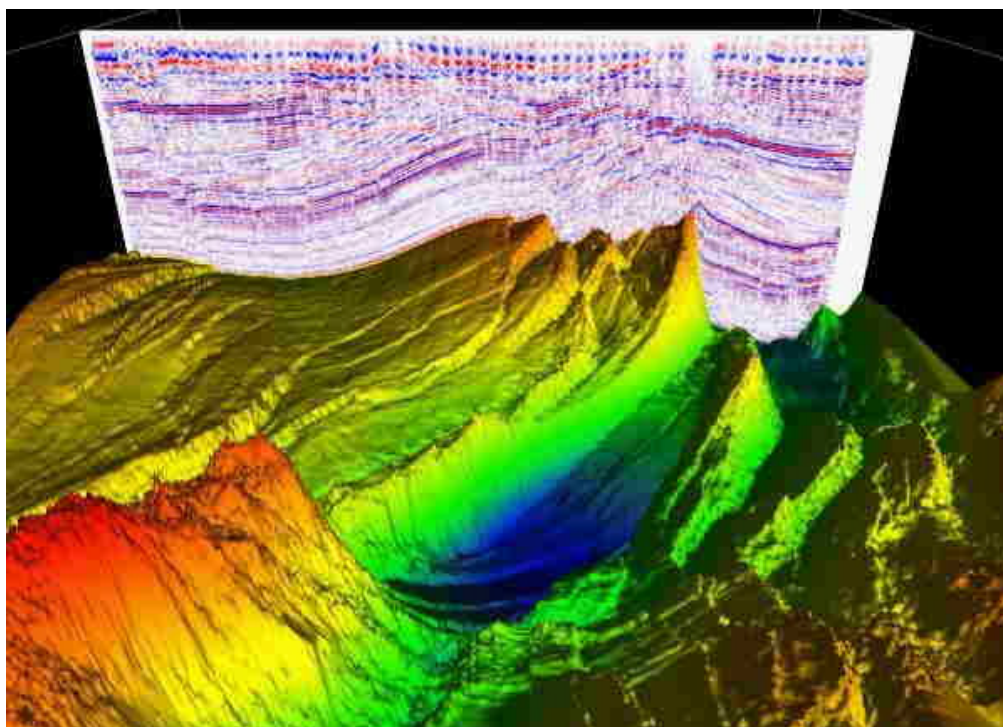
- The integrated geophysical and geological package results could be done for presentation and marketing packages.



SHALLOW GEOPHYSICS

Services offered include:

- Depth to Bedrock surveying and mapping
- Soil Sequence Stratigraphy imaging and mapping (clay, silt, sand, gravel, cobbles & boulders)
- In-Situ Material Properties Testing (eg. shear wave analysis, electrical resistivity, rock rippability The rippability of rock is controlled by numerous parameters including uniaxial strength, degree of weathering, abrasiveness, and spacing of discontinuities. Typically, weathered rocks, highly stratified or laminated rocks, and rocks with extensive fracturing are rippable.
- 3D Subsurface imaging and Mapping
- Buried Object Detection
- Void Detection / Imaging• Shallow and Deep Oil/Gas Exploration
- Groundwater Exploration
- Lake/River Bathymetry, Ice Thickness





GEOTECHNICAL SITE INVESTIGATIONS

Makamin provides shallow geophysical surveying and data analysis services for geotechnical and civil engineers tasked with completing site investigations within their project limits. The data results we provide represent additional subsurface information required to understand what is going on in-between and beyond borehole locations in order to fully appreciate and understand in-situ conditions. Make better more confident decisions and recommendations on your client's behalf based on increased subsurface exploration coverage within your project area.

Field Tests:

- Upper bedrock surface profiling/mapping
- Soil sequence stratigraphy
- Soils characterization (clay, silt, sand, gravel, cobbles)
- Soil/rock profile geometry
- Soil/rock stiffness/hardness parameters
- 5011/rock resistivity parameters
- Fault detection and mapping

ENVIRONMENTAL INVESTIGATIONS

Makamin utilizes shallow geophysics to detect, delineate and map a wide variety anthropogenic (Man-made) subsurface features and/or buried hazards including:

- Landfill boundaries
- Buried drums
- Contaminated soils
- Graves, archaeological artifacts
- Remnant building foundations
- Buried pipelines, utilities, conduits
- Voids



NON-DESTRUCTIVE TESTING

Makamin offers a variety of geophysical methodologies to measure subsurface material properties or to scan existing infrastructure. Targeted Features:

- Shear wave velocity determination (in 1, 2 or 3 dimensions)

- Electrical resistivity testing (cathodic protection/grounding studies)

- Concrete imaging in 3-dimensions for rebar/electrical conduit mapping

- Detection of void space below concrete slab structures



LAND SURVEY

Makamin Land Survey Department is engaged in this field for the last 10 years through our partner company (GSC) and in this period this department rendered high quality services. Land survey department is equipped with well educated & experienced technical Staff using latest technology and equipment's and is providing following services:

- Land Surveying & Leveling
- All type of Topographic Surveys
- Corridor Alignments (Horizontal & Vertical) and Profile
- Cadastral Surveys: cadastral surveys create, define, mark, and re-establish the boundaries and subdivisions of the public lands
- Demarcation services: fixing the boundary or limits
- Setting out Survey
- Gate level computation services
- Digital Terrain Modeling
- Settlement Monitoring
- Earthworks Volumes
- Underground Utilities Survey
- As-Built Survey
- Establishment of Control Station & Bench Mark
- Precise & Differential Leveling
- Survey Consultancy and Check engineering
- Hiring of Survey Crews
- Aerial Control Mapping
- Laser I 30 Scanning



Delta Lab Services:

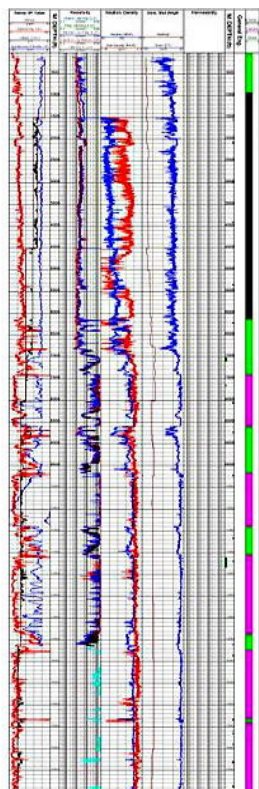
DELTA labs are used to increase total recovery from existing fields. Our services enable our clients to optimize reservoir performance and maximize hydrocarbon recovery from their producing fields. DELTA has taken extensive measures to ensure the services and data provided at the highest quality.

Applied core analysis technologies:

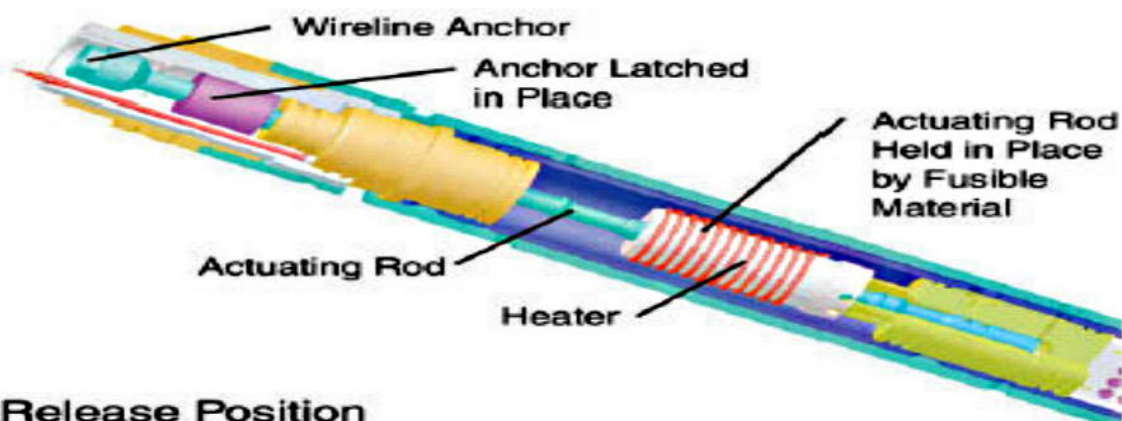
- Standard core sampling processes
- Hydraulic systems
- Oriented core samplings
- Full closure Systems
- Complete closing systems
- Core samplings using sponge coring crowns with sponges
- Core samplings with insulating agents
- Anti-jamming systems

Core Express Analysis Services

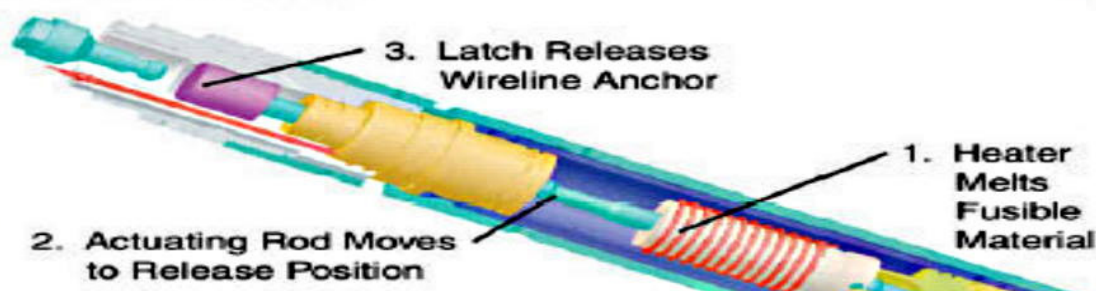
- High-resolution CT scan
- Density of the mineral skeleton
- Porosity
- Determination of permeability in a steady state
- Receiving high-resolution images



Closed Position



Release Position



DELTA provides a complete range of downhole well-logging services. We provide superior and efficient e-line services, offering our experienced personnel, and enhanced by reliable machinery, and efficient conveyance methods

We recognize that data accuracy is fundamental and achieves this through aggressive technology development.

Our proactive research and development programs deliver new logging instrumentation and advance the logging interpretation sciences.

Our comprehensive training programs educate field crews in safety procedures and the handling of hazardous materials. Our field service engineers, and geoscientists apply leading technology in the

ELECTRICAL WIRELINE SERVICES

- Resistivity Logging, Analysis, and Processing
- Density Logging, Analysis, and Processing
- Sonic / Acoustic Logging, and Processing
- Neutron Logging, and Processing
- Acoustic Imaging
- Optical Imaging
- Electric Imaging
- Gamma Ray Logging
- Spontaneous Potential Logging (SP)
- Nuclear magnetic resonance (NMR)
- Perforation
- Risks & Opportunities Services
- Supply & Demand Dynamics Services
- External Scanning
- Portfolio Positioning





Support & Maintenance Services

1. Lifting Inspection.....	67
2. Fabrication.....	68
3. Mechanical & Electrical Contracting.....	69
4. Cathodic Protection.....	70
5. Machine Shop.....	71
6. Tubulars Accessory Supplies.....	76
7. Zarqa Free Zone.....	77



Lifting Inspection Services

LIFTING INSPECTION EQUIPMENT

LIFTING EQUIPMENT THROUGH EXAMINATION AND
PROOF LOAD TESTING
LIFTING APPLIANCES:

Mobile Cranes
Crawler Cranes
Tower Cranes
Overhead
Cranes
Gantry Cranes& Slewing Jib
Forklifts
Elevators



Lifting Accessories

Slings
(Wire Rope, Webbing)
Chain
Shackles
Hooks
Sheaves
Clamps

Lifting Inspection Services

- RIG AUDIT, INSPECTION & COMMISSIONING SERVICES
- LIFTING EQUIPMENT THROUGH EXAMINATION AND PROOF LOAD TESTING
- TUBULAR INSPECTION SERVICES
- RIG PARTS AND HANDLING TOOLS INSPECTION
- NDT INSPECTION SERVICES
- CALIBRATION SERVICE
- LIFTING ACCESSORIES SUPPLYING
- LIFTING OPERATION SUPERVISION
- TRAINING SERVICES
- ISSUED CERTIFICATES & REPORTS





DELTA provides custom engineered and fabrication solutions for liquids processing, storage, and handling.

In addition to expert fabrication, we provide our customers with engineering support, to help the design of custom equipment and parts, and to improve existing components.

Our Fabrication Services

- Modular Fabrication & Assembly
- Pipe Fabrication and Assembly
- Mechanical Assembly
- Electrical Design, Wiring, & FAT Testing
- Structural Steel Fabrication
- Certified Welding
- Steel, Alloy, Carbon, Stainless Steel Welding & Assembly
- Insulation and Painting
- Maintenance services of valves, static and rotary equipment
- Pressure vessel repair



Overview

DELTA is a leading and recognized integrator of Mechanical & Electrical solutions. It earned this solid reputation through a multitude of projects in various sectors.

The Contracting Division covers design, procurement, installation, testing and commissioning in compliance with strict project requirements and deadlines for residential spaces as well as office buildings, production plants, commercial and public facilities; providing a one-stop solution to clients by simultaneously managing all their building systems needs whether electrical engineering, air conditioning, ventilation, plumbing, fire protection, communication and security systems.

For more specific expertise, DELTA teams up with the best specialists and is able to make a global offer where quality, safety and performance are the driving forces.

Electrical works:

- MV/LV substation and transformers
- Power plant installation (generators) and power distribution (electrical main switchboard, panels)
- LV distribution (bus duct, cable support and distribution and cabling works). and UPS installation

Plumbing and fire fighting:

- Water treatment plant installation and piping works
- Cold and hot water production and distribution
- Storm water drainage and pumping Systems
- Soil and waste water treatment
- Equipment installation and water treatment for swimming pools
- Firefighting & LPG Systems

HVAC:

- Air-cooled chilled water systems with de-super heater
- Water-cooled chillers
- Cooling towers
- Air-handling units, fan coil units and split systems
- Variable Refrigerant Volume (VRV) systems
- Fresh air, ventilation and exhaust systems
- Cold & Clean Rooms
- Building Management System (BMS) implementation

Communication & Security Systems:

- Security/Access Control
- Fire Alarm systems
- Closed-Circuit Television (CCTV) & Master Antenna Television (MATV)
- Telephone & data (cabling, PABX)
- Public Address (PA and EWIS)



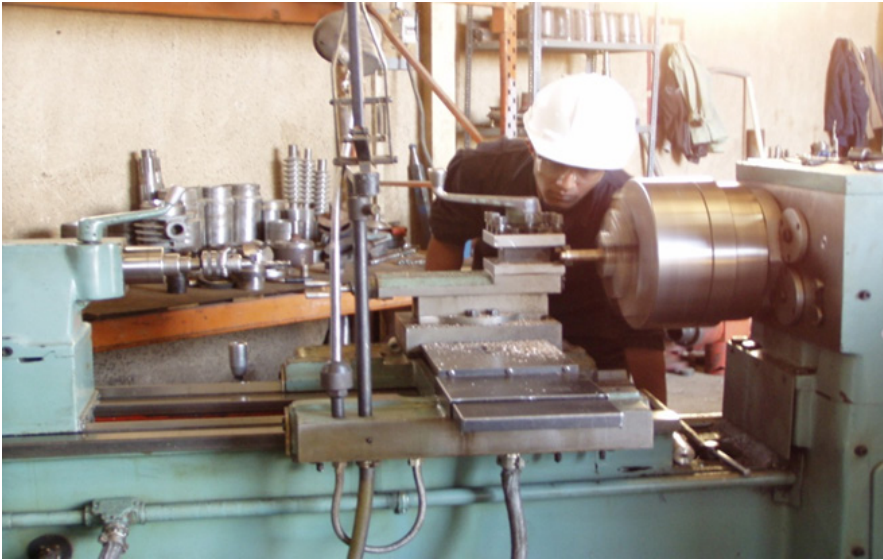
Cathodic Protection Services



Pipeline systems are the backbone of the critical infrastructure of the oil and gas industry. Since much of the industry's infrastructure lifecycle is solely dependent on its capacity to run smoothly, effectively and accurately; it takes greater clarity and accuracy over conventional methods to avert spills and ruptures while saving money and lives.

To date, our key areas of expertise include corrosion protection to life cycle extension and maintenance inspection. And to ensure optimum operations, the utmost productivity gains while meeting safety and environmental concerns; we provide total solutions from expert attention, specialist services, all the way to quality products and materials.





DELTA, machine workshop built and equipped with all the necessary machines to be prepared to fabricate any required tools for Oilfield Equipments Operations.

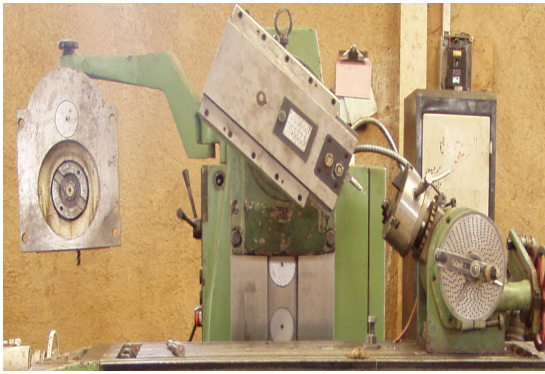
Also DELTA machine workshop has all facilities to cut and rethreads drilling pipe and production tubing tool joints with high accuracy machining according to international oilfield standards: (API/ BS/ DIN).



Machine Shop / Re-Threading Facilities



We do CNC milling, drilling, boring, and reaming CNC lathe work, manual milling and lathe work, sawing, grinding, welding and assembly work.



Machine Shop / Re-Threading Facilities:

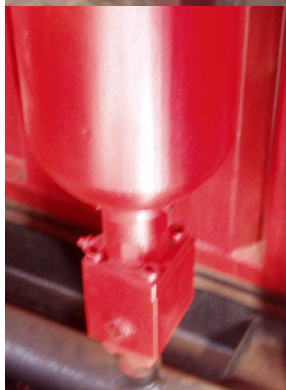
- Open-hole, cased-hole and rental tools and services single-trip whipstocks/ casing exit systems
- Packer services
- Fishing jar services
- Cutting/milling services
- Motors
- Power swivels
- Triplex pumps
- Reverse packages
- Foam units
- Thread repair
- Connection repairs
- Drill pipe, Drill collars, Heavy weight drill pipe
- API and premium tubing and casing, Work string tubing
- Mod Acme, Pup joints, Subs
- Stabilizers, Kellys, Specialist & fishing tools
- Sub manufacturing
- Standpipe and manifold fittings



Warehouse Facilities



Design & Fabricating Oilfield Equipment





DELTA provides a wide range of products and services required to drill and complete a well. Every well planned today requires a number of accessories

In addition to casing and tubing strings, to be successful. Along with the planning, We help operators plan for accessory usage and has them available when requested.

Our Tubular Accessory Supplies

- Pup Joints
- Marker joints
- Cross overs
- Centralizers
- Float shoes and collars (API and Premium Connections)
- Bucking Services
- Cementing equipment (plugs, wipers, etc.)
- Couplings (API and Premium Connections)
- IPC tubing and casing
- Liners
- Blast joints
- Subs
- Assist with casing crews and technical support
- Inspection coordination
- Pipe Maintenance

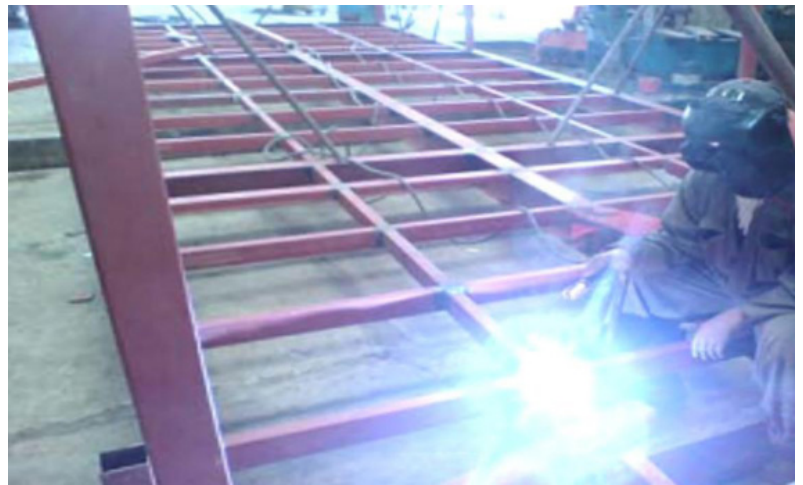
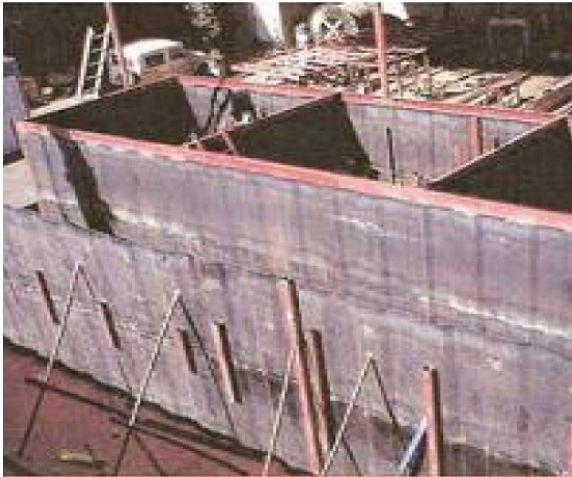


Zarqa Free Zone



DELTA Group
Branch at
Zarqa free
zone, Jordan.









Completions Services

- 1. Completion.....82
- 2. Stimulation.....83





Downhole Completion Tools and Services

DELTA Completion portfolio includes a variety of tools and technologies that provide complete and reliable solutions to both onshore and offshore producers.

Toe Sleeves

ORIO 3D Toe Sleeve
ORIO Toe Sleeve

Extensive Line of Liner Hanger Systems

Mechanical Running Tool
Hydraulic Running Tool
Ranger Liner Hanger
Scout Liner Top Packer

Frac Plugs

SWAGE Dissolvable Frac Plug
TOMCAT Hybrid Frac Plug
Dissolvable Frac Ball
TOMCAT All Composite Frac Plug

Frac Sleeves

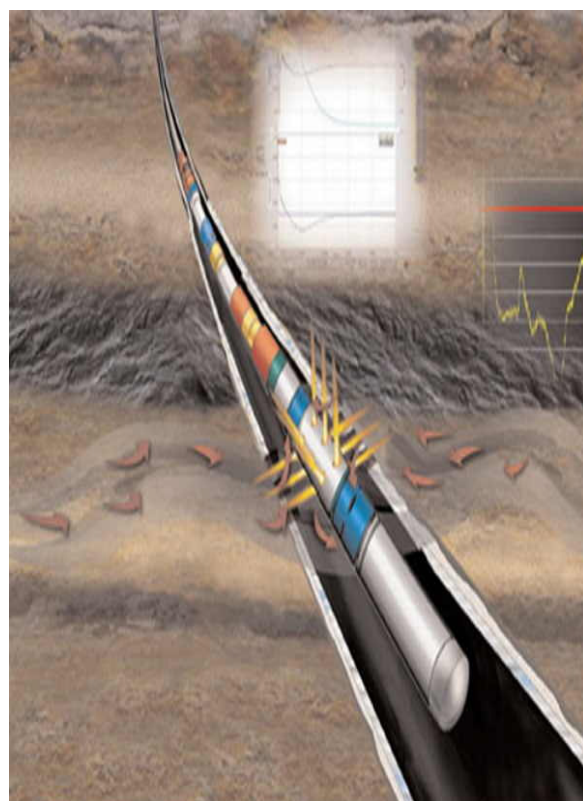
Frac Sleeves

Inflatable Production Packers

Inflatable Production & Service Packers

Float Subs

Float Subs



STIMULATION SERVICES

Production Enhancement

Oil and gas wells start production on day at maximum one day after another until the case changes in which production of oil decreases and water production increases as the situation changes over time. This makes the well less and less profitable.

Delta have a full range of additives from matrix acidizing to fracturing gel treatments.



Matrix Acidizing Systems

Matrix acidizing involves the placement of an acid in the wellbore to dissolve and remove impediments to production without fracturing the rock and damaging the reservoir. The acid will come into contact with hydrocarbon downhole so additives must be mixed into it to prevent the formation of sludges and emulsions.

Fracturing

Fracturing on the other hand aims to deliberately fracture the rock with an overburden of hydraulic pressure and then hold open or "prop" open the cracks with sized sand called proppant.

Water or hydrocarbons based gels are used to suspend and carry this proppant into the fracture formation creating a conduit for enhanced production.





Additive Types

Additive Types Available with us include, but not limited to the following:

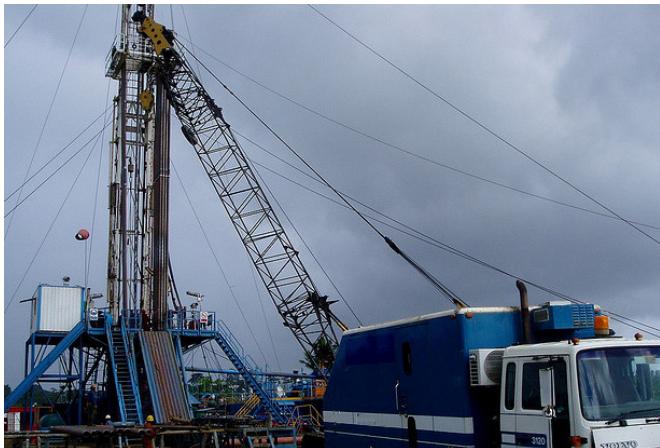
Corrosion Inhibitor	An essential part of any stimulation treatment
Emulsion Control	Anionic and Non-ionic non-emulsifiers and sludge prevention
Emulsifiers & Retarders	Enhanced acid penetration with safe simple to use additives
Iron Control	Complex the iron to stop precipitation, sludge and formation damage
Friction Reducers	Maximise your pumping capacity
Fracturing Gel	Carry the proppant in a safe and reversible manner

Intervention & Abandonment

- 1. Slickline.....86
- 2. Fishing.....88



Wireline Services (Slickline)



SLICKLINE:

DELTA offer Slickline Services for both on-shore and offshore. We provide Slickline Services for all segments of Well intervention.

SLICKLINE SERVICES

- Slick line for down hole in oil and gas wells
- Bottom hole pressure and temperature survey
- Bottom hole flowing survey Down hole safety valve testing
- Tag bottom of well, Remove obstruction
- Retrieve and install down hole safety valve
- Retrieve and install injection valve
- Retrieve and install any type of plug
- Tubing end location, Open and close sliding side door
- Paraffin cutter from tubing
- Sand bailing
- Tubing Cutting / Perforation



SLICKLINE SOLUTIONS

- Mechanical Intervention Applications
- Setting and removal of flow control devices
- Cleaning of the wellbore, wax removal, scale removal & sand or other debris removal
- Control Equipments and Tools
- Replacement Tools
- Setting of hydraulic packers
- Well plug and abandonment
- Fishing services
- Memory Production logging for Measurement of down-hole temperature and pressure
- Memory gauges for Measurement of downhole temperature and pressure
- Deployment of 3rd party memory tools





Our Fishing Services

- Open-hole, cased-hole and rental tools and services
- single-trip whipstocks/casing exit systems
- Packer services
- Fishing jar services
- Cutting/milling services
- Motors
- Power swivels
- Triplex pumps
- Reverse packages
- Foam units

Fishing Services provides a full line of cased-hole, open-hole tools run by experienced supervisors – proven to be among the best in the business. Delta Engineering & Oilfield Services has technically gained designed to take care of the toughest fishing, and milling operations in a minimal amount of time, as well as casing cutters that use the same technology.

Fishing Services' technically advanced mills, cutters and casing exit systems, in addition to many other fishing tools, service line, which ensures a quality product and outcome, every time.

Dedicated to the same standards of safe working environments, quality tools and superior services as other Delta service lines. Fishing Services greatly enhances the ability to service customers around the clock, seven days a week in all Delta locations.

The Fishing Services service line of Delta provides the oil and gas industry with a complete line of fishing tools and services, including:

There are a number of problems that can occur while drilling a well. Whether a drillstring breaks and falls to the bottom of the wellbore or a bit breaks, accidents happen. Even pipe or a tool can fall from the rig floor into the bottom of the well.

This stray equipment that has fallen into the well is referred to as fish or junk, and regular drill bits cannot drill through it. Should a fish fall into a well, fishing is required to remove it.

DELTA POWER SWIVELS

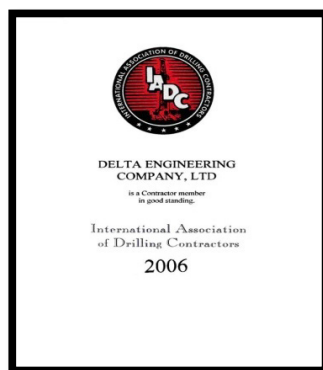
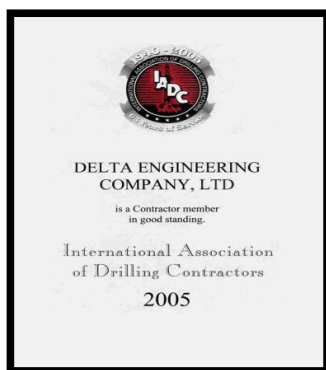
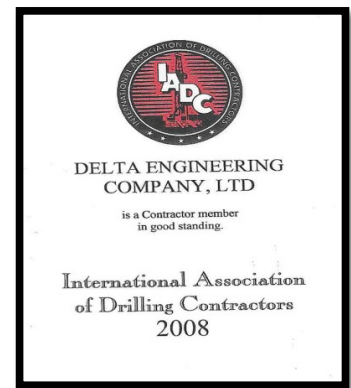
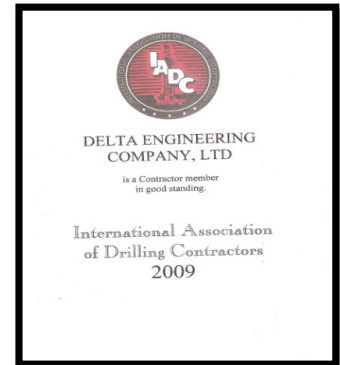
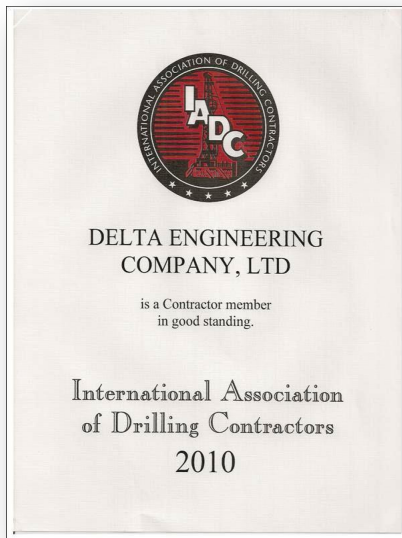




Achievements & Awards

1. Achievements & Awards.....91
2. Delta Contacts.....102



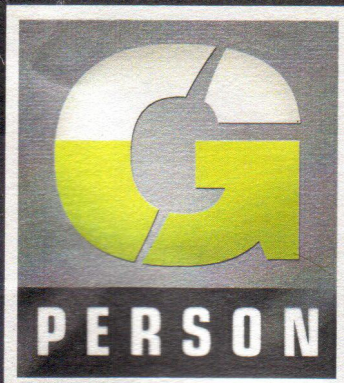








In appreciation, token of dagger (Jambia) was presented to President and CEO of B.I.D. Mr. Jose E. Prieto by DELTA's Chairman Mr. Abdul Aziz A. Ahmed



Delta Engineering Company Limited

from Jordan

IDEASB2B

Abdul Aziz Abdul A.
Ahmed, CHAIRMAN

innETIN
INNOVATION CO-OPERATION



Diamond
Category

Winner
of the
Century International
Quality ERA
in Geneva

USA and CHINA
The perfect partnership

PETROBAS
Bigger than Exxon and Apple









BURREN-DELTA HIGH ADVANCED LTD SIGNED A CONTRACT WITH YEMEN GOVERNMENT



Burren Energy UK
LONDON
(HEAD OFFICE)
Kierran Cross, 11 Strand,
London WC2N 5HR
United Kingdom
Tel: +44 (0)20 7484 1900
Fax +44 (0)20 7484 1910

BURREN signed a contract with Yemen Government at new PSA on Block 6, located in province of Shabwa Basin and Lease between the major Oil & Gas producing area in the West of Marib, onshore area of 3,911 sq. km.

DELTA High Advanced LTD (Yemen Oil Field Services Company) will share with BURREN Energy UK in Exploration Activities in Republic of Yemen (Block 6).

DELTA International Achievements

DELTA Engineering Co. Ltd (Ethiopia) CONTRACT IN THE FEDERAL DEMOCRATIC REPUBLIC OF ETHIOPIA



Africa Activities in Ethiopia.
In August 2008, signed a contract for
Petroleum Exploration & Production
Between
DELTA Engineering Co. LTD (Ethiopia)
and
Falcon Petroleum Limited (UK).
in Addis Ababa for MER (Main Ethiopia
Rift), Lake Abaya & Segen Blocks.



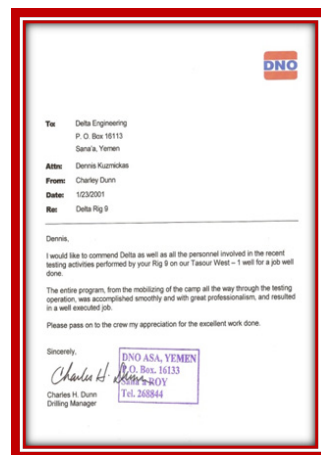
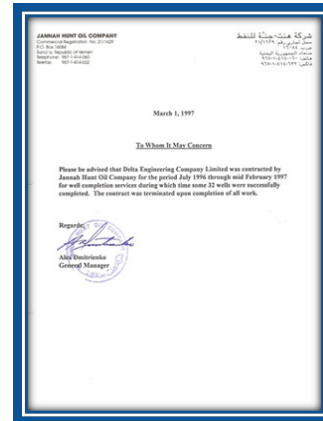
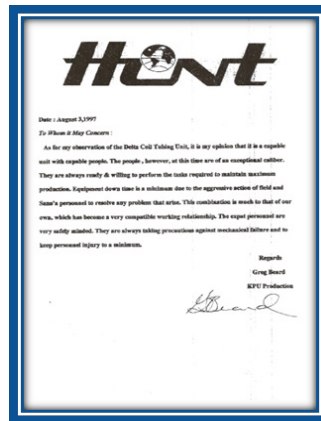
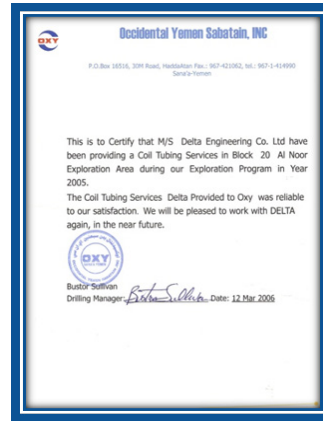
DELTA International Achievements



Africa Activities in Ethiopia.
In December 2008, signed a contract for 2 blocks for Concession between DELTA Engineering Co. LTD and his direct partner in Addis Ababa Ethiopia, covering Oil & Gas Exploration and Development of Metema & Gimbi Blocks Directly from the Ethiopian Government



DELTA International Achievements





Contact Us

email: info@deltagroupcomp.com

+967 1 676 601/2/3 YEMEN
+968 7 999 9101 OMAN
+962 6 553 55 89 JORDAN
+2 011 597 927 19 EGYPT



Yemen Office

Email:
delta1@yemen.net.ye
50th Street Bait Boss Area
Sana'a, Rep. of Yemen



Oman Office

Email:
info@alnajmagroup.com
Al Mazyona Free Zone
Oman



Jordan Office

Email:
deltajor@deltagroupcomp.com
Khalda
187 Wasfi AlTal St., 1st Floor
Amman, Jordan



Egypt Office

Email:
deltaegy@deltagroupcomp.com
Nasr City
Cairo, Egypt



Libya Office

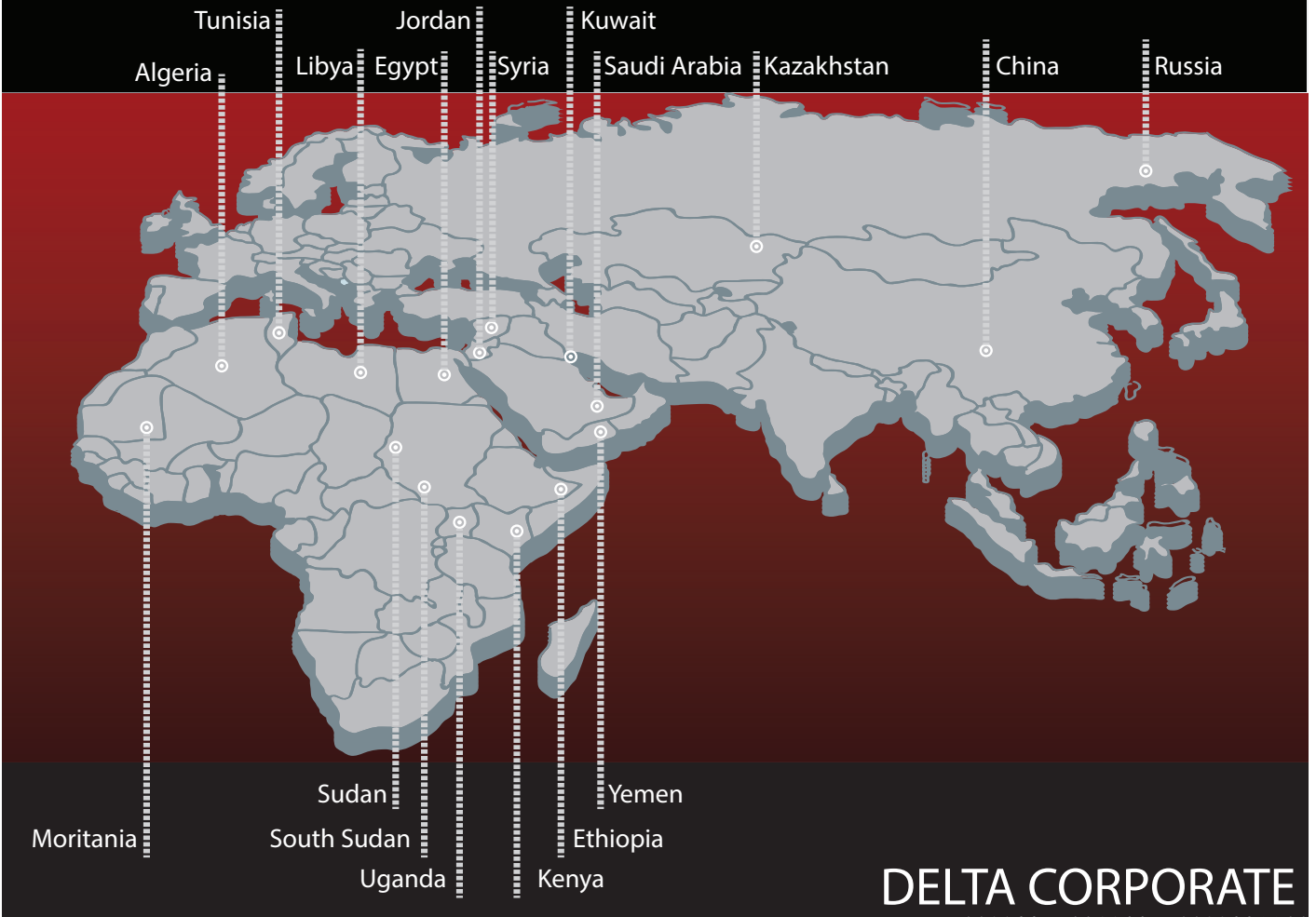
Email:
deltajor@deltagroupcomp.com
deltaegy@deltagroupcomp.com
+216 58 916 210



Syria Office

Email:
mahfouz67@yahoo.com
mahfouz-ahmad@outlook.com
+963 933 410 240
+963 112 212 304





DELTA CORPORATE

DELTA Engineering Company Ltd.



www.deltagroupcomp.com
www.deltagroupco.com

info@deltagroupcomp.com
delta1@yemen.net.ye
deltajor@deltagroupcomp.com